



- | | | | |
|---------------------------------|---------------------------------|-----------------------------|---------------------|
| Existing School | Cafeteria Addition & Renovation | Area of Interior Renovation | Existing Playground |
| Two Story 13 Classroom Addition | Two Story Support Addition | New Paving Area | New Play Areas |

SAU 15 - AUBURN VILLAGE SCHOOL

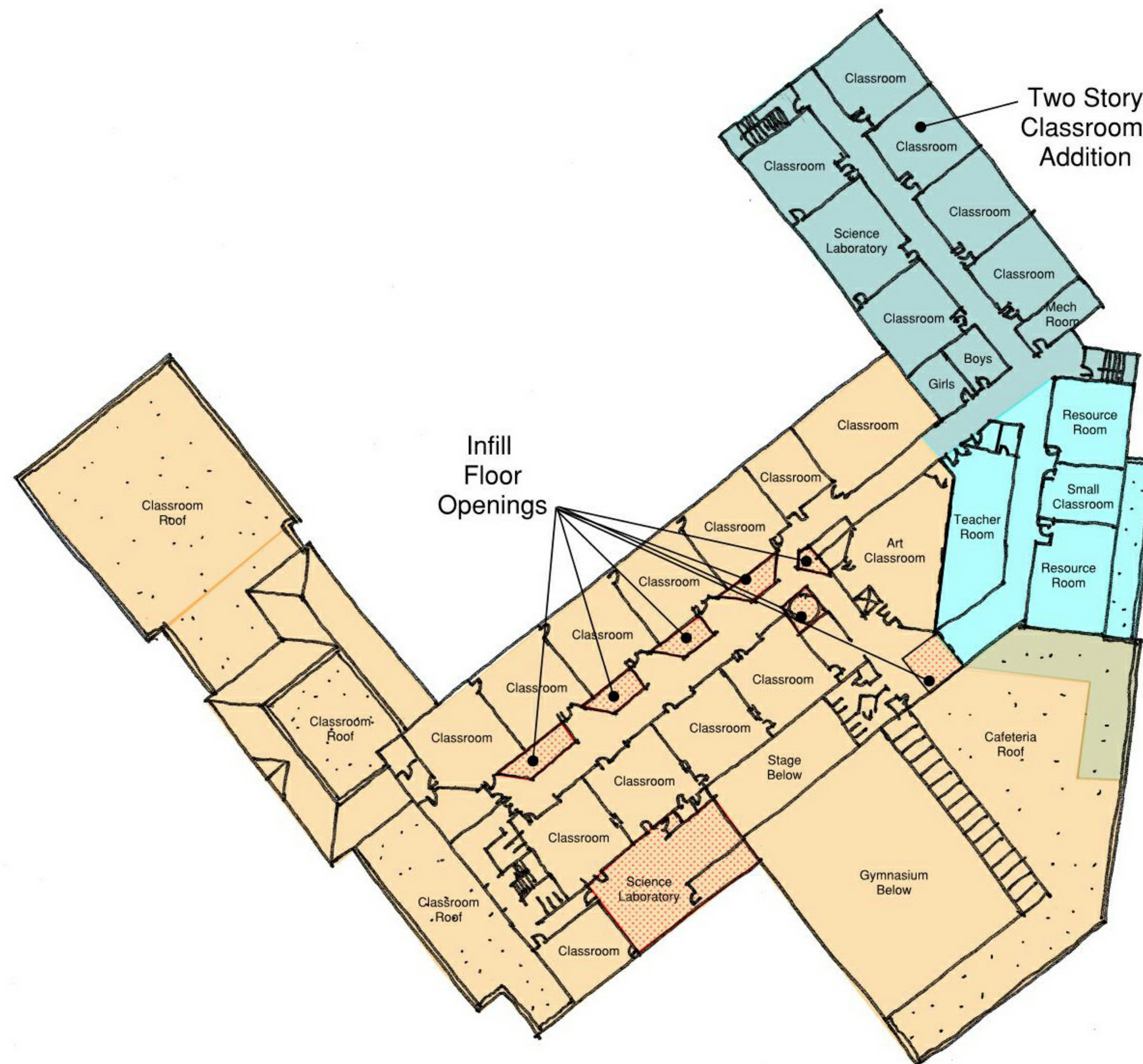
ADDITION/ RENOVATIONS

FIRST FLOOR DIAGRAM

PREPARED BY: HL TURNER GROUP, INC. ■ ARCHITECTS ■ ENGINEERS ■ BUILDING SCIENTISTS ■ 27 LOCKE RD. CONCORD, NH 03301, USA ■ 603.228.1122 ■ 603.228.1124 ■ www.hltturner.com

NOT TO SCALE
DATE: 01/09/2018
SHEET: SD-1 PROJECT: 3933

TURNER
GROUP



- | | | |
|---------------------------------|---------------------------------|-----------------------------|
| Existing School | Cafeteria Addition & Renovation | Area of Interior Renovation |
| Two Story 13 Classroom Addition | Two Story Support Addition | |

SAU 15 - AUBURN VILLAGE SCHOOL

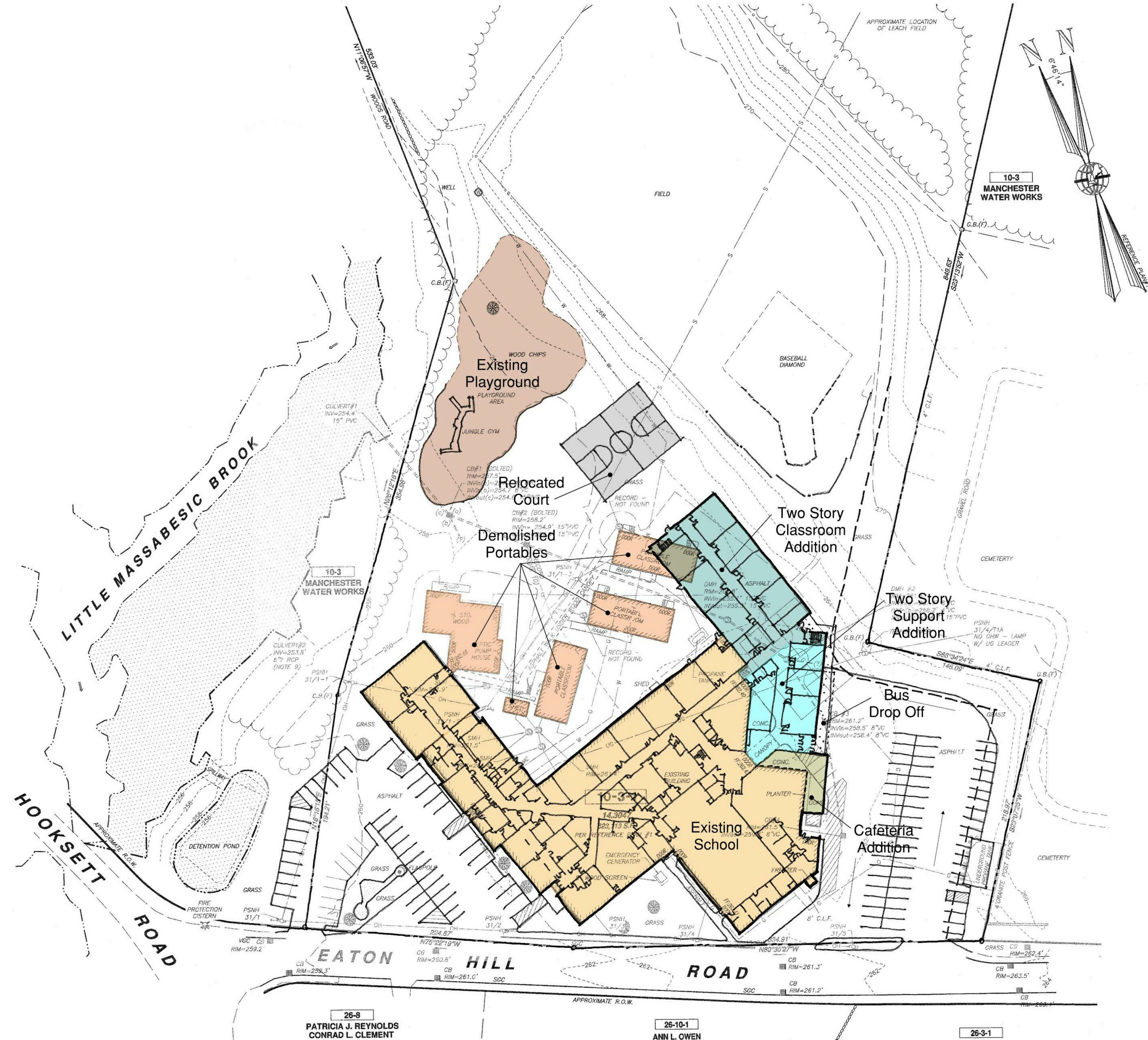
ADDITION/ RENOVATIONS

SECOND FLOOR DIAGRAM

NOT TO SCALE
DATE: 01/09/2018
SHEET: SD-2 PROJECT: 3933

PREPARED BY: HL TURNER GROUP, INC. ■ ARCHITECTS ■ ENGINEERS ■ BUILDING SCIENTISTS ■ 27 LOCKE RD. CONCORD, NH 03301, USA ■ 603.228.1122 ■ 603.228.1124 ■ www.hltturner.com

TURNER
GROUP



SAU 15 - AUBURN VILLAGE SCHOOL

ADDITION/ RENOVATIONS

PROPOSED SITE DIAGRAM

NOT TO SCALE
DATE: 01/09/2018
SHEET SD-3 PROJECT: 3933

PREPARED BY: HL TURNER GROUP, INC. ■ ARCHITECTS ■ ENGINEERS ■ BUILDING SCIENTISTS ■ 27 LOCKE RD. CONCORD, NH 03301, USA ■ 603.228.1122 ■ 603.228.1124 ■ www.hltturner.com

TURNER
GROUP



SAU 15 - AUBURN VILLAGE SCHOOL

ADDITION/ RENOVATIONS

NORTH AERIAL VIEW

NOT TO SCALE
DATE: 01/09/2018
SHEET: SD-4 PROJECT: 3933

PREPARED BY: HL TURNER GROUP, INC. ■ ARCHITECTS ■ ENGINEERS ■ BUILDING SCIENTISTS ■ 27 LOCKE RD. CONCORD, NH 03301, USA ■ 603.228.1122 ■ 603.228.1124 ■ www.hltturner.com





SAU 15 - AUBURN VILLAGE SCHOOL

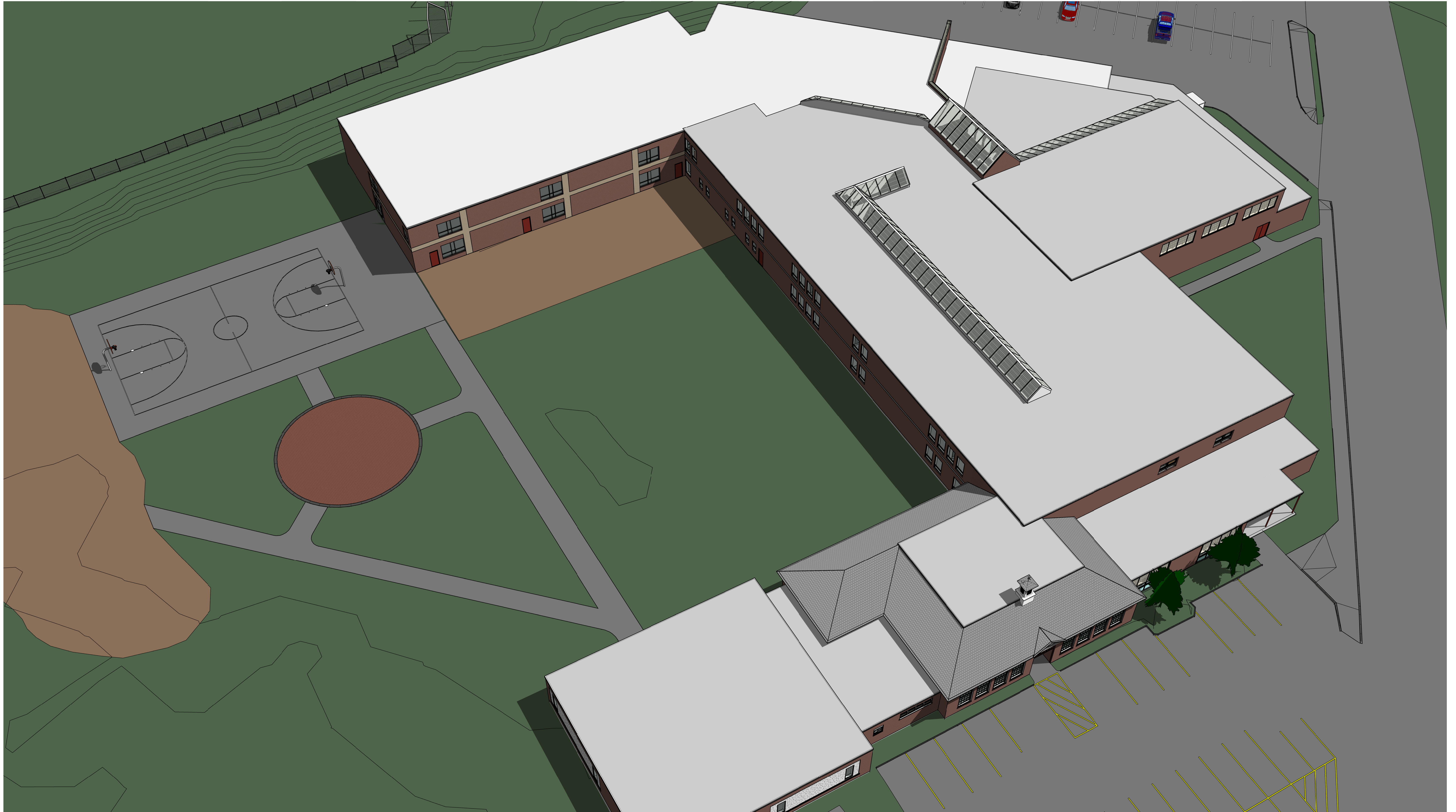
ADDITION/ RENOVATIONS

NORTHEAST AERIAL VIEW

PREPARED BY: HL TURNER GROUP, INC. ■ ARCHITECTS ■ ENGINEERS ■ BUILDING SCIENTISTS ■ 27 LOCKE RD. CONCORD, NH 03301, USA ■ 603.228.1122 ■ 603.228.1124 ■ www.hltturner.com

NOT TO SCALE
DATE: 01/09/2018
SHEET: SD-5 PROJECT: 3933





SAU 15 - AUBURN VILLAGE SCHOOL

ADDITION/ RENOVATIONS

SOUTHWEST AERIAL VIEW

PREPARED BY: HL TURNER GROUP, INC. ■ ARCHITECTS ■ ENGINEERS ■ BUILDING SCIENTISTS ■ 27 LOCKE RD. CONCORD, NH 03301, USA ■ 603.228.1122 ■ 603.228.1124 ■ www.hltturner.com

NOT TO SCALE
DATE: 01/09/2018
SHEET: SD-6 PROJECT: 3933





SAU 15 - AUBURN VILLAGE SCHOOL

ADDITION/ RENOVATIONS

SOUTHWEST VIEW

NOT TO SCALE
DATE: 01/09/2018
SHEET: SD-7 PROJECT: 3933

PREPARED BY: HL TURNER GROUP, INC. ■ ARCHITECTS ■ ENGINEERS ■ BUILDING SCIENTISTS ■ 27 LOCKE RD. CONCORD, NH 03301, USA ■ 603.228.1122 ■ 603.228.1124 ■ www.hltturner.com

