



**Welcome to
Kindergarten
at AVS!**

Kindergarten Teachers

Kerrie Moynihan
Meghan Jerome
Becki Duquette
Amy Overhulser

Schedule

Soft Start

Morning Meeting

Walk to Read

Snack/Story Time

Recess (AM & PM)

Literacy & Math Blocks

Lunch

Small Group work/Pull out

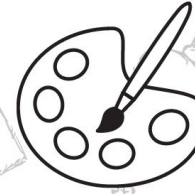
Special (Music, Art, Gym, Guidance, Health, & Library)

At home learning & practice!

- Letter & Number Recognition
- High Frequency Words/Heart Words
- Monthly Challenges
- Fine & Gross Motor Practice

Arrival/Dismissal Routines

Full day Kindergarten enables your child to take the bus to and from school or to be dropped off and picked up by a parent/guardian. Prior to the start of school, you will want to familiarize yourselves with [Pick Up Patrol](#). The information provided on this site informs your child's teacher and the office of the way that you would like your child to go home each day and report absences/tardies.



AUBURN

BEFORE SCHOOL
Opens at 7:00AM

AFTER SCHOOL
Pickup by 6:00PM



ACTIVITIES

Arts & Crafts ~ Gym Games
Outdoor Games ~ Snack Time ~ Table Games
Homework Supervision



VACATION/SUMMER CAMP

Located at the IMAGINE Campus
23 Back River Road, Bedford.

Camps coordinate with most vacation dates/weeks.

NewMorningSchools.com

ADMIN@NEWMORNINGSCHOOLS.COM
(603) 669-3591



Drop Off and Pick Up

- Students need to enter and exit on the passenger side of the vehicle for safety
- Students should get in and out of the car with their backpacks independently.
Please practice over the summer.
- Pull all the way forward

Cafeteria

- Each student will have an account (even if they don't plan to participate right away). Yes, you can bring lunch from home!
- All student purchases can be monitored at www.myschoolbucks.com
- You can also put funds on your students account via website. If you send in money with your student, please place in an envelope and make sure that it is labeled with your student's name and indicate that it is lunch money.
- Students will be given 3 options each day: Hot, munchable, or a sandwich. All meals come with a milk, fruit, and a vegetable.
 - Review menu at home and teachers will review before leaving classroom as well. Students can practice "ordering" at home!
- We are always available to help each student navigate the lunch line.
- Each menu item is clearly labeled with both words and pictures to accommodate all students' reading abilities.
- Each month, the lunch menu is on the website. Some items have descriptions.
- Please reach out to me with any questions or concerns.
- Sbelanger@sau15.net or 483-2769 ext. 5

Dear Parents

(of elementary school aged kids)

When your kids come to school we will have to help them open LOTS of the things you pack for lunch.

PLEASE HAVE THEM PRACTICE OPENING THINGS BY THEMSELVES.

These are EASIER to open. If I help them open it, I won't be putting my hands on parts that will go in their mouth.



These are HARDER to open. If you send these PLEASE have them PRACTICE opening it. If I help them open it, I will be putting my hands on parts that will go in their mouth.



If your kiddo can open everything in their lunch, it means less time waiting with their hand up, more time eating and less germs!! (even though we are washing our hands and disinfecting)

Parent Communication

- Bloomz App
 - School Page, Grade Level Page, and Classroom Page
- Pick Up Patrol
- Email
- Telephone
- Fall Conferences

From the School Nurse

- Updated physical
- Immunization record
- Student health history
- Medications at school
- Allergy concerns
- Communication/update PUP if absent, tardy or being dismissed early
- Questions?



School Nurse

Keeping track of allergies,
patching up skinned knees.
Checking all the lumps and
bumps and doing it with ease.
Soothing all the tummy aches,
whether they are real or fake.
Knowing when a smile or hug is
all that it will take.
Calling up a Mom or Dad when
something's really wrong...to
come and get their little one

Important Dates

August 26th - New Student & Kindergarten Open House

August 27th **or** 28th - First Day for K
staggered start

Before July 15th - Teacher Assignments -
letters received with assigned start date



PARENT TEACHER ASSOCIATION

- \$15 Single | \$25 Dual - Membership
- Sign Up to volunteer for specific events or to be "on call"
 - We will just email potential volunteers and ask them to sign up if available

NO PRESSURE!

WHAT DO THE PTA FUNDS REALLY DO



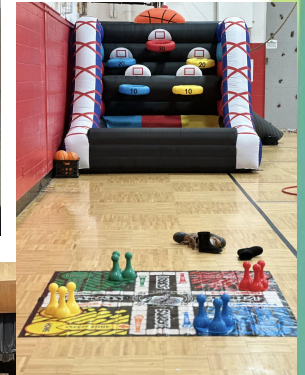
- Funds all Field Trips
- Purchased Book Vending Machine
- Replaced Swings
- Teacher Grants



DON'T FORGET ALL THE EVENTS...



- BACK TO SCHOOL BBQ
- ICE CREAM SOCIAL
- MISSOULA THEATER
- SPOOKY WALK
- FAMILY BINGO NIGHT
- HOLIDAY MOVIE NIGHT
- FATHER/DAUGHTER DANCE
- MOTHER/SON GAME NIGHT
- TEACHER APPRECIATION WEEK





Questions?